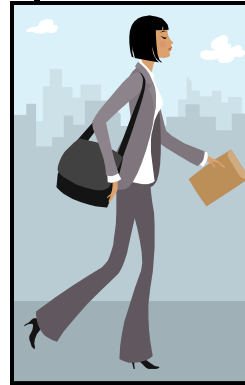


# Benedictine Spirituality in the Workplace



## Leadership Conference for Women

September 25, 2010  
9:00 a.m.-3:00 p.m.



Sacred Heart Monastery  
1005 W. 8th St.  
Yankton, SD

## Hotel Accomodations

Yankton Area Hotels/Motels

- **Best Western Kelly Inn**  
1607 East Highway 50  
Yankton , SD  
1-605-665-2906
- **Colonial Inn Motel**  
1509 Broadway  
Yankton, SD  
1-605-665-3647
- **Days Inn**  
2410 Broadway Avenue  
Yankton, SD  
1-605-665-8717
- **Holiday Inn Express**  
2607 Broadway Avenue  
Yankton, SD  
1-605-665-3177

## Leadership Conference for Women

September 25, 2010  
9:00 a.m.-3:00 p.m.

Sacred Heart Monastery  
1005 W. 8th St.  
Yankton, SD 57078

E-mail: [bgacnik@mtmc.edu](mailto:bgacnik@mtmc.edu)

Online registration form:  
[www.yanktonbenedictines.org](http://www.yanktonbenedictines.org)

## Registration Form

Name \_\_\_\_\_

Address \_\_\_\_\_

Phone \_\_\_\_\_

E-mail \_\_\_\_\_

Please enclose: \$35.00 includes conference fee and noon lunch

Check payable to: Sacred Heart Monastery

Send to: Sister Bonita Gacnik; 1005 W. 8th St.; Yankton, SD 57078

Online registration form: [www.yanktonbenedictines.org](http://www.yanktonbenedictines.org) (rest to follow)

## Keynote Speaker: Norvene Vest



### Norvene Vest

Norvene Vest is a spiritual director and author of six books on Benedictine spirituality. In her book Friend of the Soul: A Benedictine Spirituality of Work she asks, "To what extent are we active in encouraging one another's growth and celebrating the talents of people with whom we work?"

Norvene will also bring to these presentations her experience in community development in the state of California. She states that these experiences, "... gave me lots of food for thought about what people 'expect' in a leader."

Is our work life-giving and meaningful? Is it of service to others and is it in a place where we can experience God? Norvene will help us to discover how we can be an instrument of service and growth in the workplace.

September 25, 2010

### Description of the Day

**Registration:** 8:30 – 9:00 a.m.

Front Door: Sacred Heart Monastery

**Prayer:** 9:00 a.m.

Bishop Martin Marty Memorial Chapel

### Morning Session:

*WORK AS THE SOUL'S FRIEND:  
Insights from the Rule of St. Benedict  
for the Modern World of Work*

### Break / Question and Answer

**Lunch** (Included in fee)

### Afternoon Session:

*TENDER COMPETENCE:  
Benedictine Qualities of Leadership  
for the Contemporary Workplace*

### Break / Question and Answer

**Closing and Prayer:** 3:00 p.m.



### Directions to Sacred Heart Monastery

1. If you are traveling **US Hwy 81 from the north of Yankton**, drive to 8th St. (there is a stop light) and turn right or west. Proceed on 8th St until you come to Summit St. (there will be a stoplight) Continue west about 1 block and you will see a sign for Sacred Heart Monastery, turn left and proceed until you see the front entrance on your right under the clock tower.

2. If you are traveling using **US Hwy 81 from the south of Yankton**, drive to 4th St., turn left at the stop light. Follow 4th St. to 8th St., turn left and proceed 1 block until you see the sign for the Monastery, turn left and proceed to the front entrance of the Monastery.

3. If you are traveling **using US Hwy 50 from the east**, you are on 4th St. Follow 4th St. west until you come to 8th St., turn left and proceed 1 block until you see the sign for the Monastery, turn left and proceed to the front entrance to the Monastery.

4. If you are traveling using **US Hwy 50 from the west**, turn right at West City Limits Rd, go south to second stop sign at 8th St. and turn left onto 8th St., proceed until you see the sign for Sacred Heart Monastery. Turn right (south) and proceed until you see the front entrance to the Monastery on your right under the clock tower.

